

Victorian Energy Fact Sheet

When you're signing up to something new, it's important to know what's what. Here's some essential info about Powershop and this offer.



GAS

OFFER **POWERSHOPLITE**

DISTRIBUTOR **AUSNET**

ZONE **WEST**

About Powershop

We sell gas to homes and businesses in Victoria. We work hard to provide better prices, a fairer deal for all our customers, and a better future for the planet.



Get energy insights and stay in control of your energy use

OVER 200,000
app downloads



Get the best service from our award winning Customer Team

93% average
customer
satisfaction rating

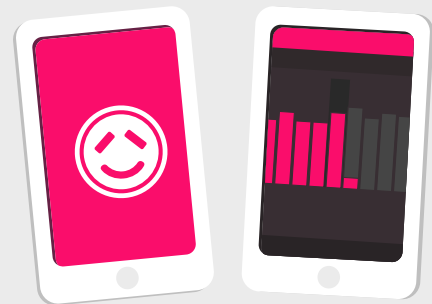


Get 100% carbon offset energy at no extra cost to you

OVER 1.8 Million
tonnes of carbon offset
thanks to Powershop customers

About this offer

This is a simple set and forget offer with no discounts, just a great rate. You get access to the Powershop app to manage your bills and energy usage.



Need Help?

Visit our help centre:
powershop.com.au/help

Call us on:
1800 462 668

The following pages have been created by the Victorian Energy Compare Government website.

Get in touch if you're not sure how to read the info on the following pages. We can help you understand which rates and tariff applies to you.

You can also visit
powershop.com.au/vic-energy-fact-sheets



Powershop Australia Pty Ltd

No contract term

Call 1800 462 668

www.powershop.com.au

Estimated gas cost

1 person 92 MJ/day	LOW 92 MJ/day	\$920/year No discount conditions apply to this offer
2 to 3 people 159 MJ/day	MED 159 MJ/day	\$1,360/year No discount conditions apply to this offer
4+ people 201 MJ/day	HIGH 201 MJ/day	\$1,640/year No discount conditions apply to this offer

Features

- Direct debit payment required
- No pay on time discount
- Fixed price contract
- No paper bills available

Estimated costs are inclusive of GST and are based on typical usage in your postcode, with regular usage on weekday afternoons and evenings. Your household's usage may vary. Prices exclude concessions and bonuses.

A more personalised estimate can be found on the Victorian Energy Compare website at <https://compare.energy.vic.gov.au>.

Retailers must provide clear advice to help customers find the offer that best suits their circumstances.

Contact the retailer by calling **1800 462 668** and quote this Offer ID **POD190271MR**.

Offer details

Distributor	AusNet Services (gas)
Offer type	Market offer
Fuel type	Gas
Customer type	Residential
Release date	01-07-2020
Expiry date	31-12-2020

Offer eligibility

Eligibility criteria may apply, contact Powershop for details.

Contract details

Contract term	No contract term
Cooling off period	10 business days
Eligibility criteria	Eligibility criteria may apply, contact Powershop for details.
Prices are fixed	
Contract expiry details	This Powershop offer is an ongoing contract (until you or we end it) with no exit fees. Your daily supply and usage charges are secured until 30 September 2021.
Full terms and conditions	Other fees and charges may vary and are not secured. We'll let you know what your options are at the end of the benefit period in accordance with the regulatory requirements. Powershop offer bi-monthly bills and do not issue paper bills. We require a credit card or bank details. For further information in relation to Powershop and this offer - see our full terms and conditions at: powershop.com.au/terms-and-conditions

Fees

Other fee	(incl. GST) Flat rate: \$0.00
In addition to the applicable prices, you may incur other fees, including disconnection fees. Information regarding fees is set out on our fees page powershop.com.au/fees	

Disconnection fee**Flat rate: \$9.39**

Disconnection fees may apply to manually de-energise a property. The fee will be passed on from your distributor and may vary.

Additional information

Additional fees may apply. For more information, please visit the retailers website at www.powershop.com.au.

Billing details

Bill frequency	2 months
Payment options	Direct debit

Offer rate and details

Season 1 gas charges - Off Peak (09-May - 31-May)	Tariff (incl. GST)
Daily supply charge	86.25 c/day
Consumption	
All consumption	1.69c/MJ
Season 2 gas charges - Peak (01-Jun - 30-Sep)	Tariff (incl. GST)
Daily supply charge	86.25 c/day
Consumption	
All consumption	1.88c/MJ
Season 3 gas charges - Off Peak (01-Oct - 08-May)	Tariff (incl. GST)
Daily supply charge	86.25 c/day
Consumption	
All consumption	1.69c/MJ

Daily supply charge: a charge that applies for supplying gas to your premises for each day of the billing period, regardless of how much gas is used.

MJ: a 'MJ' stands for megajoule and is the unit of measurement for your gas bill.

This gas offer is only available if you have reticulated gas supply at your premises.