

# Victorian Energy Fact Sheet

When you're signing up to something new, it's important to know what's what. Here's some essential info about Powershop and this offer.



OFFER  
**POWERSHOPLITE**

DISTRIBUTOR  
**AUSTRALIAN GAS NETWORKS**

ZONE  
**CENTRAL**

## About Powershop

We sell gas to homes and businesses in Victoria. We work hard to provide better prices, a fairer deal for all our customers, and a better future for the planet.



Get energy insights and stay in control of your energy use

OVER **200,000**  
app downloads



Get the best service from our award winning Customer Team

**93%** average  
customer  
satisfaction rating

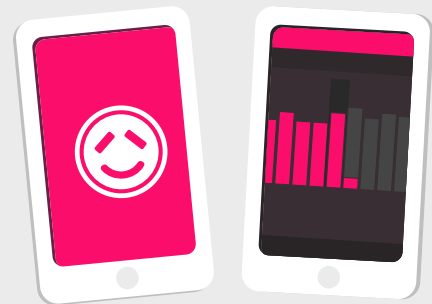


Get 100% carbon offset energy at no extra cost to you

OVER **1.8 Million**  
tonnes of carbon offset  
thanks to Powershop customers

## About this offer

This is a simple set and forget offer with no discounts, just a great rate. You get access to the Powershop app to manage your bills and energy usage.



## Need Help?

Visit our help centre:  
**[powershop.com.au/help](https://powershop.com.au/help)**

Call us on:  
**1800 462 668**

The following pages have been created by the Victorian Energy Compare Government website.

Get in touch if you're not sure how to read the info on the following pages. We can help you understand which rates and tariff applies to you.

You can also visit  
**[powershop.com.au/vic-energy-fact-sheets](https://powershop.com.au/vic-energy-fact-sheets)**






## Powershop Australia Pty Ltd

 No contract term





 Call 1800 462 668

 [www.powershop.com.au](http://www.powershop.com.au)

### Estimated gas cost

 1 person	<b>LOW</b> 92 MJ/day	<b>\$980/year</b> No discount conditions apply to this offer
 2 to 3 people	<b>MED</b> 159 MJ/day	<b>\$1,480/year</b> No discount conditions apply to this offer
 4+ people	<b>HIGH</b> 201 MJ/day	<b>\$1,790/year</b> No discount conditions apply to this offer

### Features

-  Direct debit payment required
-  No pay on time discount
-  Fixed price contract
-  No paper bills available

Estimated costs are inclusive of GST and are based on typical usage in your postcode, with regular usage on weekday afternoons and evenings. Your household's usage may vary. Prices exclude concessions and bonuses.

A more personalised estimate can be found on the Victorian Energy Compare website at <https://compare.energy.vic.gov.au>.

Retailers must provide clear advice to help customers find the offer that best suits their circumstances.

Contact the retailer by calling **1800 462 668** and quote this Offer ID **POD190262MR**.

### Offer details

<b>Distributor</b>	Australian Gas Networks
<b>Offer type</b>	Market offer
<b>Fuel type</b>	Gas
<b>Customer type</b>	Residential
<b>Release date</b>	01-07-2020
<b>Expiry date</b>	31-12-2020

### Offer eligibility

Eligibility criteria may apply, contact Powershop for details.

### Contract details

<b>Contract term</b>	No contract term
<b>Cooling off period</b>	10 business days
<b>Eligibility criteria</b>	Eligibility criteria may apply, contact Powershop for details.
<b>Prices are fixed</b>	
<b>Contract expiry details</b>	This Powershop offer is an ongoing contract (until you or we end it) with no exit fees. Your daily supply and usage charges are secured until 30 September 2021.
<b>Full terms and conditions</b>	Other fees and charges may vary and are not secured. We'll let you know what your options are at the end of the benefit period in accordance with the regulatory requirements. Powershop offer bi-monthly bills and do not issue paper bills. We require a credit card or bank details. For further information in relation to Powershop and this offer - see our full terms and conditions at: <a href="http://powershop.com.au/terms-and-conditions">powershop.com.au/terms-and-conditions</a>

### Fees

<b>Other fee</b>	(incl. GST) <b>Flat rate: \$0.00</b>
In addition to the applicable prices, you may incur other fees, including disconnection fees. Information regarding fees is set out on our fees page <a href="http://powershop.com.au/fees">powershop.com.au/fees</a>	

**Disconnection fee****Flat rate: \$12.80**

Disconnection fees may apply to manually de-energise a property. The fee will be passed on from your distributor and may vary.

**Additional information**

Additional fees may apply. For more information, please visit the retailers website at [www.powershop.com.au](http://www.powershop.com.au).

**Billing details**

<b>Bill frequency</b>	2 months
<b>Payment options</b>	Direct debit

**Offer rate and details**

<b>Gas charges - Anytime (All year)</b>	<b>Tariff (incl. GST)</b>
<b>Daily supply charge</b>	78.60 c/day
<b>Consumption</b>	
All consumption	2.05c/MJ

**Daily supply charge:** a charge that applies for supplying gas to your premises for each day of the billing period, regardless of how much gas is used.

**MJ:** a 'MJ' stands for megajoule and is the unit of measurement for your gas bill.

This gas offer is only available if you have reticulated gas supply at your premises.