

Victorian Energy Fact Sheet

When you're signing up to something new, it's important to know what's what. Here's some essential info about Powershop and this offer.



GAS

OFFER **POWERSHOPLITE**

DISTRIBUTOR **AUSNET**

ZONE **WEST**

About Powershop

We sell gas to homes and businesses in Victoria. We work hard to provide better prices, a fairer deal for all our customers, and a better future for the planet.



Get energy insights and stay in control of your energy use

OVER **200,000**
app downloads



Get the best service from our award winning Customer Team

93% average
customer
satisfaction rating

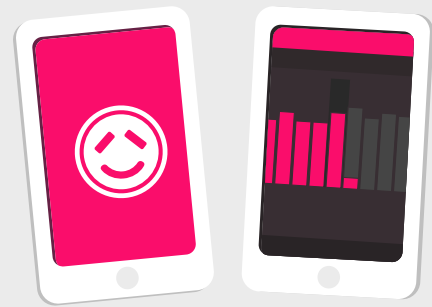


Get 100% carbon offset energy at no extra cost to you

OVER **1.8 Million**
tonnes of carbon offset
thanks to Powershop customers

About this offer

This is a simple set and forget offer with no discounts, just a great rate. You get access to the Powershop app to manage your bills and energy usage.



Need Help?

Visit our help centre:
powershop.com.au/help

Call us on:
1800 462 668

The following pages have been created by the Victorian Energy Compare Government website.

Get in touch if you're not sure how to read the info on the following pages. We can help you understand which rates and tariff applies to you.

You can also visit
powershop.com.au/vic-energy-fact-sheets






Powershop Australia Pty Ltd

 No contract term





 Call 1800 462 668

 www.powershop.com.au

Estimated gas cost

 1 person	LOW 92 MJ/day	\$890/year No discount conditions apply to this offer
 2 to 3 people	MED 159 MJ/day	\$1,290/year No discount conditions apply to this offer
 4+ people	HIGH 201 MJ/day	\$1,540/year No discount conditions apply to this offer

Features

-  Direct debit payment required
-  No pay on time discount
-  No fixed price contract
-  No paper bills available

Estimated costs are inclusive of GST and are based on typical usage in your postcode, with regular usage on weekday afternoons and evenings. Your household's usage may vary. Prices exclude concessions and bonuses.

A more personalised estimate can be found on the Victorian Energy Compare website at <https://compare.energy.vic.gov.au>.

Retailers must provide clear advice to help customers find the offer that best suits their circumstances.

Contact the retailer by calling **1800 462 668** and quote this Offer ID **POD108240MR**.

Offer details

Distributor	AusNet Services (gas)
Offer type	Market offer
Fuel type	Gas
Customer type	Residential
Release date	30-06-2019
Expiry date	29-06-2020

Offer eligibility

This product and document is only applicable to Victorian residential customers in the AusNet Services West distribution area. Other eligibility criteria may apply, contact Powershop for details.

Contract details

Contract term	No contract term
Cooling off period	10 business days
Eligibility criteria	This product and document is only applicable to Victorian residential customers in the AusNet Services West distribution area. Other eligibility criteria may apply, contact Powershop for details.
Prices are not fixed	We may update your tariff from time to time to reflect market changes and economic conditions. We'll always notify you of any tariff change - this will usually be by email, and by no later than the date of your next bill to be impacted by the variation.
Contract expiry details	This Powershop offer has no lock in contracts or exit fees
Full terms and conditions	Powershop offer bi-monthly bills and do not issue paper bills. We require a credit card or bank details. For further information in relation to Powershop and this offer - see our full terms and conditions at: powershop.com.au/prices/

Fees

Other fee	(incl. GST) Flat rate: \$0.00
In addition to the applicable prices, you may incur other fees, including disconnection fees. Information regarding fees is set out on our fees page powershop.com.au/fees	

Additional information

Additional fees may apply. For more information, please visit the retailers website at www.powershop.com.au.

Billing details

Bill frequency	2 months
Payment options	Direct debit

Offer rate and details

Season 1 gas charges - Off Peak (09-May - 31-May)	Tariff (incl. GST)
Daily supply charge	95.11 c/day
Consumption	
All consumption	1.53c/MJ
Season 2 gas charges - Peak (01-Jun - 30-Sep)	Tariff (incl. GST)
Daily supply charge	95.11 c/day
Consumption	
All consumption	1.74c/MJ
Season 3 gas charges - Off Peak (01-Oct - 08-May)	Tariff (incl. GST)
Daily supply charge	95.11 c/day
Consumption	
All consumption	1.53c/MJ

Daily supply charge: a charge that applies for supplying gas to your premises for each day of the billing period, regardless of how much gas is used.

MJ: a 'MJ' stands for megajoule and is the unit of measurement for your gas bill.

This gas offer is only available if you have reticulated gas supply at your premises.