

# Victorian Energy Fact Sheet

When you're signing up to something new, it's important to know what's what. Here's some essential info about Powershop and this offer.



**GAS** OFFER **POWERSHOP**LITE

DISTRIBUTOR **AUSNET**

ZONE **ADJOINING WEST**

## About Powershop

We sell gas to homes and businesses in Victoria. We work hard to provide better prices, a fairer deal for all our customers, and a better future for the planet.



Get energy insights and stay in control of your energy use

**OVER 200,000**  
app downloads



Get the best service from our award winning Customer Team

**93%** average  
customer  
satisfaction rating

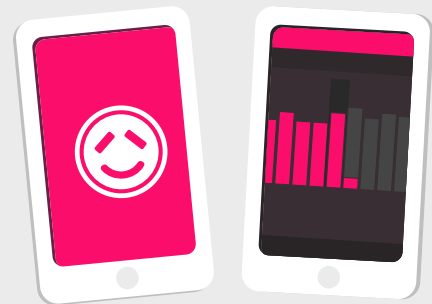


Get 100% carbon offset energy at no extra cost to you

**OVER 1.8 Million**  
tonnes of carbon offset  
thanks to Powershop customers

## About this offer

This is a simple set and forget offer with no discounts, just a great rate. You get access to the Powershop app to manage your bills and energy usage.



## Need Help?

Visit our help centre:  
[powershop.com.au/help](https://powershop.com.au/help)

Call us on:  
**1800 462 668**

The following pages have been created by the Victorian Energy Compare Government website.

Get in touch if you're not sure how to read the info on the following pages. We can help you understand which rates and tariff applies to you.

You can also visit  
[powershop.com.au/vic-energy-fact-sheets](https://powershop.com.au/vic-energy-fact-sheets)



## Powershop Australia Pty Ltd

No contract term

Call 1800 462 668

[www.powershop.com.au](http://www.powershop.com.au)

### Estimated gas cost

1 person	<b>LOW</b> 92 MJ/day	<b>\$1,050/year</b> No discount conditions apply to this offer
2 to 3 people	<b>MED</b> 159 MJ/day	<b>\$1,550/year</b> No discount conditions apply to this offer
4+ people	<b>HIGH</b> 201 MJ/day	<b>\$1,870/year</b> No discount conditions apply to this offer

### Features

- Direct debit payment required
- No pay on time discount
- No fixed price contract
- No paper bills available

Estimated costs are inclusive of GST and are based on typical usage in your postcode, with regular usage on weekday afternoons and evenings. Your household's usage may vary. Prices exclude concessions and bonuses.

A more personalised estimate can be found on the Victorian Energy Compare website at <https://compare.energy.vic.gov.au>.

Retailers must provide clear advice to help customers find the offer that best suits their circumstances.

Contact the retailer by calling **1800 462 668** and quote this Offer ID **POD108241MR**.

### Offer details

<b>Distributor</b>	AusNet Services (gas)
<b>Offer type</b>	Market offer
<b>Fuel type</b>	Gas
<b>Customer type</b>	Residential
<b>Release date</b>	30-06-2019
<b>Expiry date</b>	29-06-2020

### Offer eligibility

This product and document is only applicable to Victorian residential customers in the AusNet Services Adjoining West distribution area. Other eligibility criteria may apply, contact Powershop for details.

### Contract details

<b>Contract term</b>	No contract term
<b>Cooling off period</b>	10 business days
<b>Eligibility criteria</b>	This product and document is only applicable to Victorian residential customers in the AusNet Services Adjoining West distribution area. Other eligibility criteria may apply, contact Powershop for details.
<b>Prices are not fixed</b>	We may update your tariff from time to time to reflect market changes and economic conditions. We'll always notify you of any tariff change - this will usually be by email, and by no later than the date of your next bill to be impacted by the variation.
<b>Contract expiry details</b>	This Powershop offer has no lock in contracts or exit fees
<b>Full terms and conditions</b>	Powershop offer bi-monthly bills and do not issue paper bills. We require a credit card or bank details. For further information in relation to Powershop and this offer - see our full terms and conditions at: <a href="http://powershop.com.au/prices/">powershop.com.au/prices/</a>

### Fees

<b>Other fee</b>	<b>(incl. GST)</b> <b>Flat rate: \$0.00</b>
In addition to the applicable prices, you may incur other fees, including disconnection fees. Information regarding fees is set out on our fees page <a href="http://powershop.com.au/fees">powershop.com.au/fees</a>	

### Additional information

Additional fees may apply. For more information, please visit the retailers website at [www.powershop.com.au](http://www.powershop.com.au).

### Billing details

<b>Bill frequency</b>	2 months
<b>Payment options</b>	Direct debit

### Offer rate and details

<b>Season 1 gas charges - Off Peak (09-May - 31-May)</b>	<b>Tariff (incl. GST)</b>
<b>Daily supply charge</b>	95.11 c/day
<b>Consumption</b>	
All consumption	1.99c/MJ
<b>Season 2 gas charges - Peak (01-Jun - 30-Sep)</b>	<b>Tariff (incl. GST)</b>
<b>Daily supply charge</b>	95.11 c/day
<b>Consumption</b>	
All consumption	2.19c/MJ
<b>Season 3 gas charges - Off Peak (01-Oct - 08-May)</b>	<b>Tariff (incl. GST)</b>
<b>Daily supply charge</b>	95.11 c/day
<b>Consumption</b>	
All consumption	1.99c/MJ

**Daily supply charge:** a charge that applies for supplying gas to your premises for each day of the billing period, regardless of how much gas is used.

**MJ:** a 'MJ' stands for megajoule and is the unit of measurement for your gas bill.

This gas offer is only available if you have reticulated gas supply at your premises.